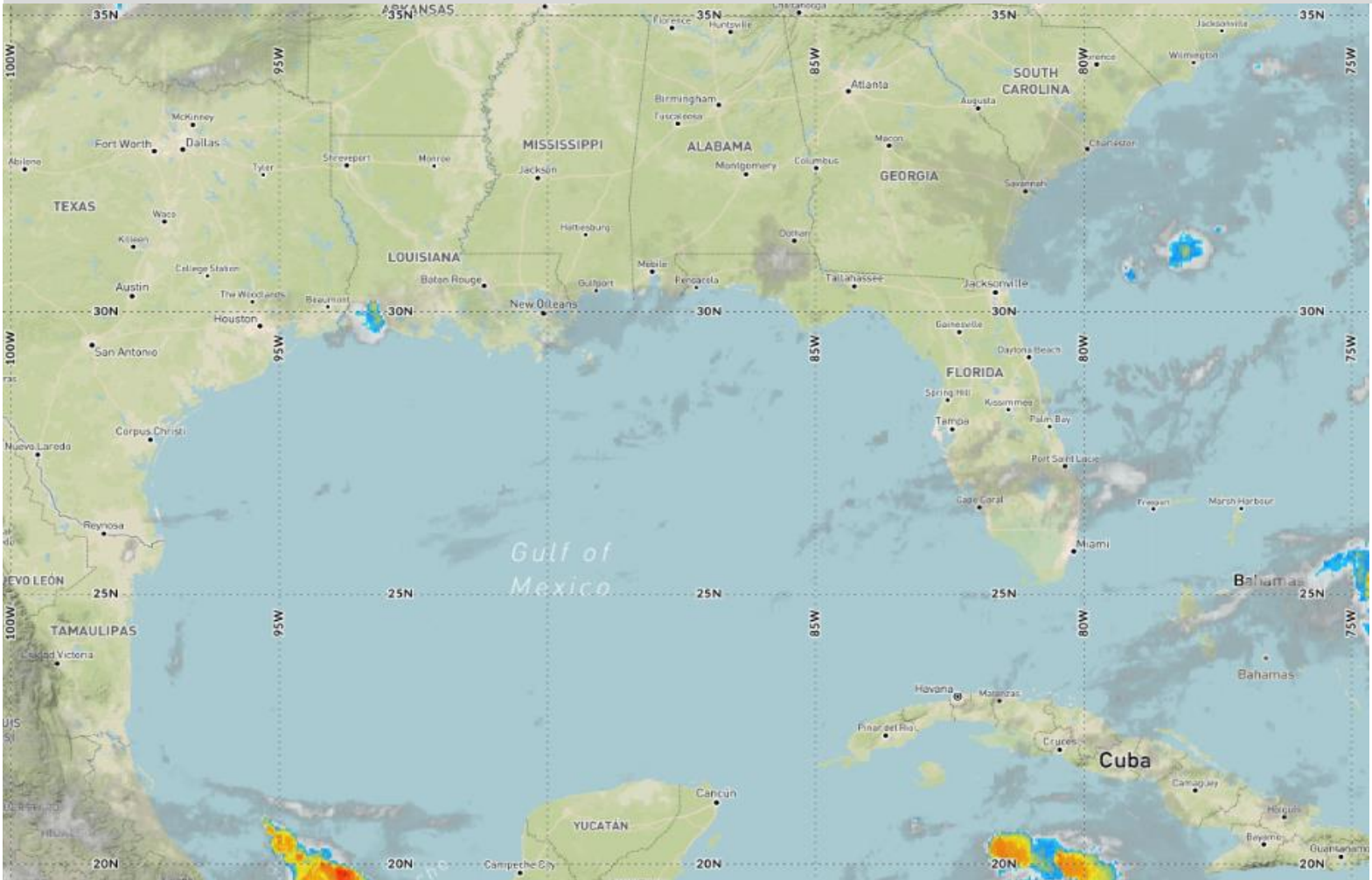


Current Radar and Satellite Data



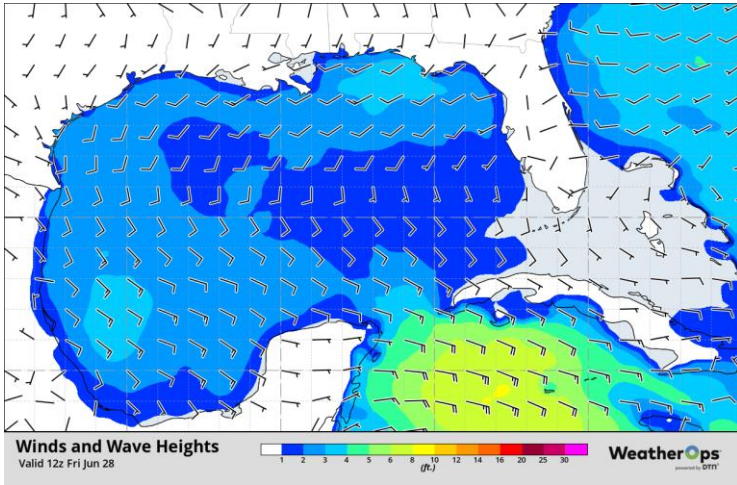
Today and Tomorrow's Weather

Seasonal conditions will continue to greet the region over the next few days as gentle to moderate winds and slight seas reside across the region. High pressure ridging remains situated across the region with developing low pressure to the north of the region. This will allow for onshore flow to persist at benign levels with a lack of particularly notable thunderstorms. High pressure will begin to set up shop across the southeast US on Saturday which will allow for winds to take on a southwesterly orientation and increase marginally. This will have little impacts on the sensible weather across the region however it will set the stage for increasing conditions later in the weekend.

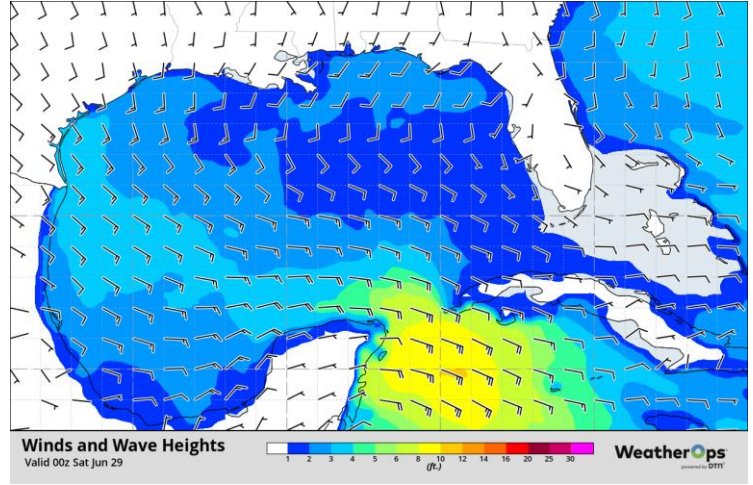
Day Three through Seven Weather Hazards

High pressure building across the southeast US will couple with the disheveled Invest 94L that is forecast to push into the Bay of Campeche and Southwest Gulf of Mexico to induce a subtle increase in southeasterly winds. Moderate to fresh winds will allow seas to increase a few feet to moderate levels on Sunday with minimal impacts otherwise anticipated. Invest 94L is expected to struggle with a plethora of factors leading to only subtle development on Sunday night. This system will bring a few showers and storms to the far southwest lease areas as otherwise uneventful conditions are forecast. Light to gentle winds will then settle in place to start the new week with high pressure building atop the region. Onshore flow will likely return to the region later next week but at magnitudes that will not cause problems. The next problem on the horizon will come in the form of Invest 95L. This open tropical wave is a few thousand miles away however at least some long-range forecast guidance is suggesting Gulf of Mexico impacts in the extended range. Forecast details are murky at best however impacts to the Gulf of Mexico, if any, are not likely until next weekend.

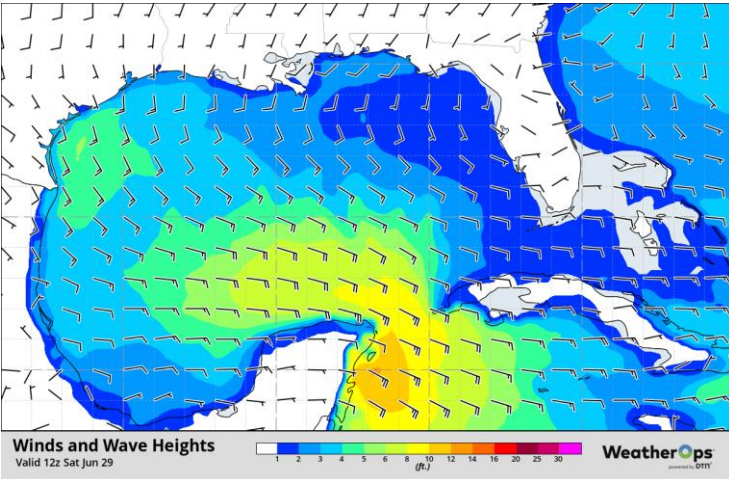
This Morning's Winds and Seas



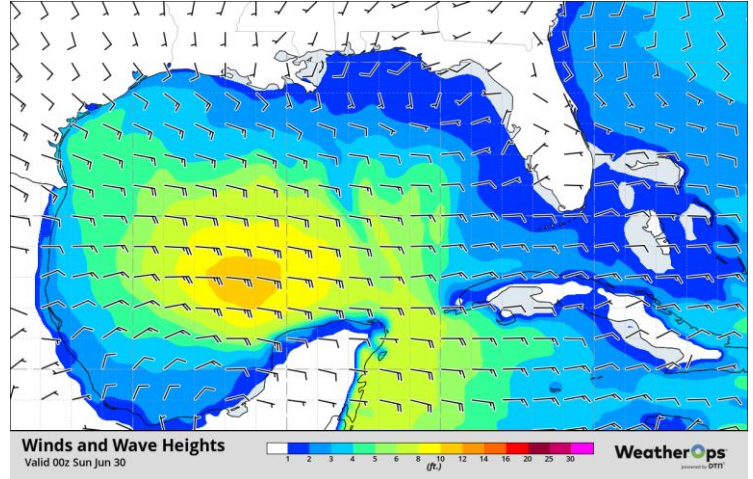
This Evening's Winds and Seas



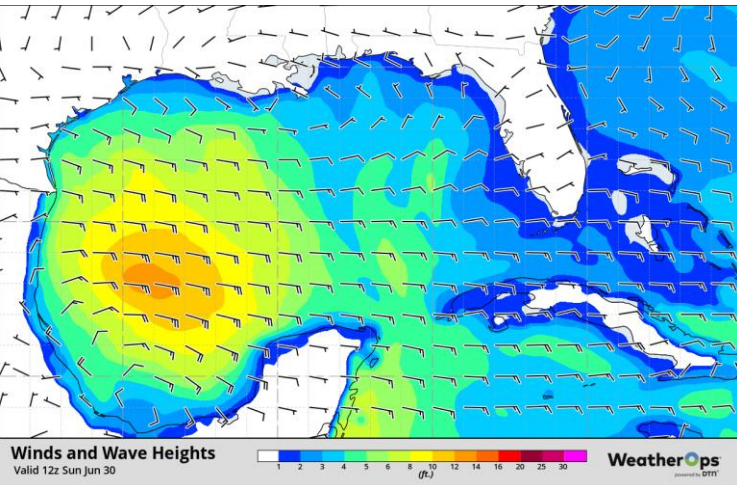
Tomorrow Morning's Winds and Seas



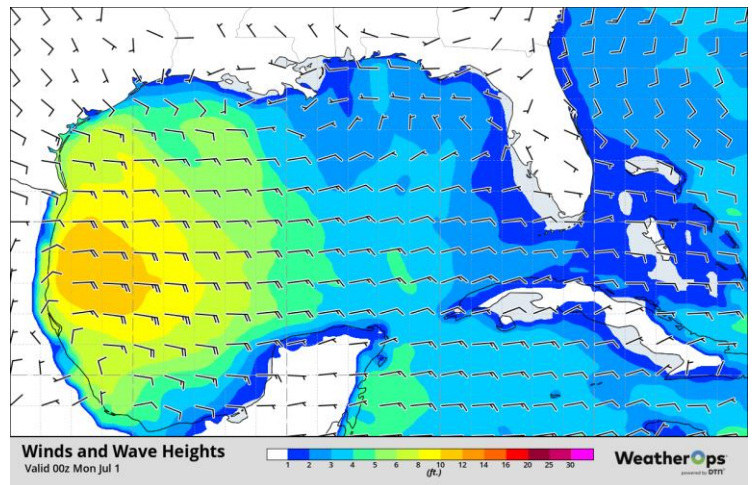
Tomorrow Evening's Winds and Seas



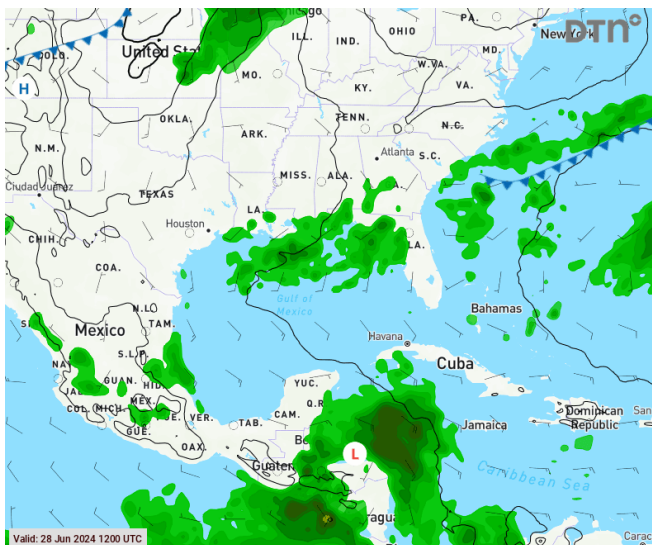
Day 3 Morning Winds and Seas



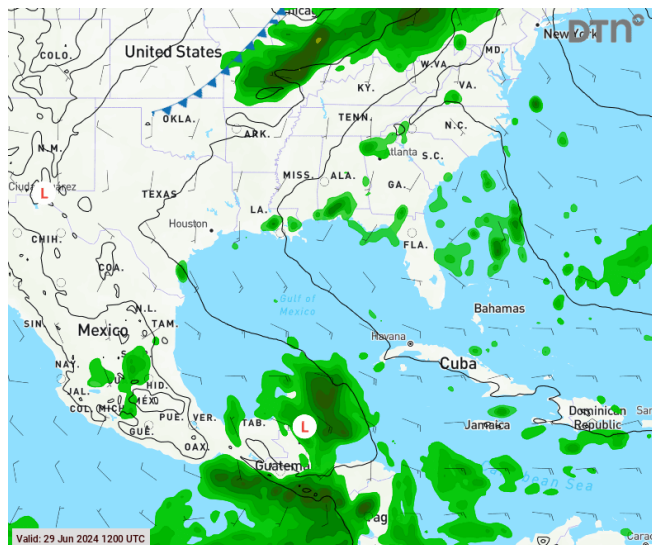
Day 3 Evening Wind and Seas



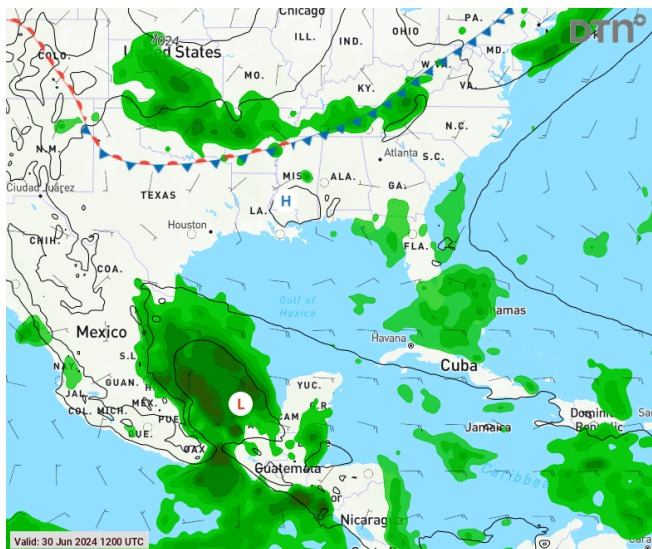
Day 1 Surface Chart



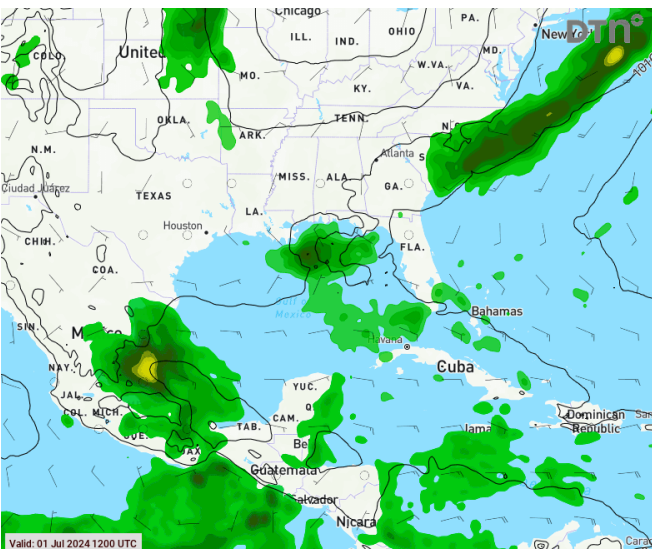
Day 2 Surface Chart



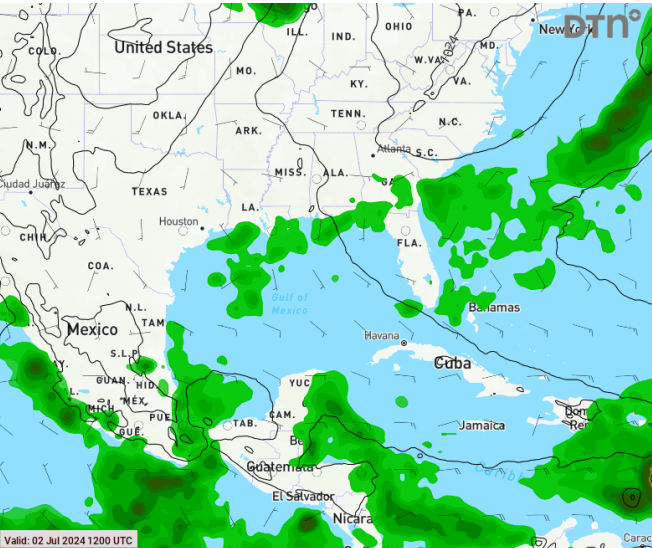
Day 3 Surface Chart



Day 4 Surface Chart



Day 5 Surface Chart



Day 6 Surface Chart

